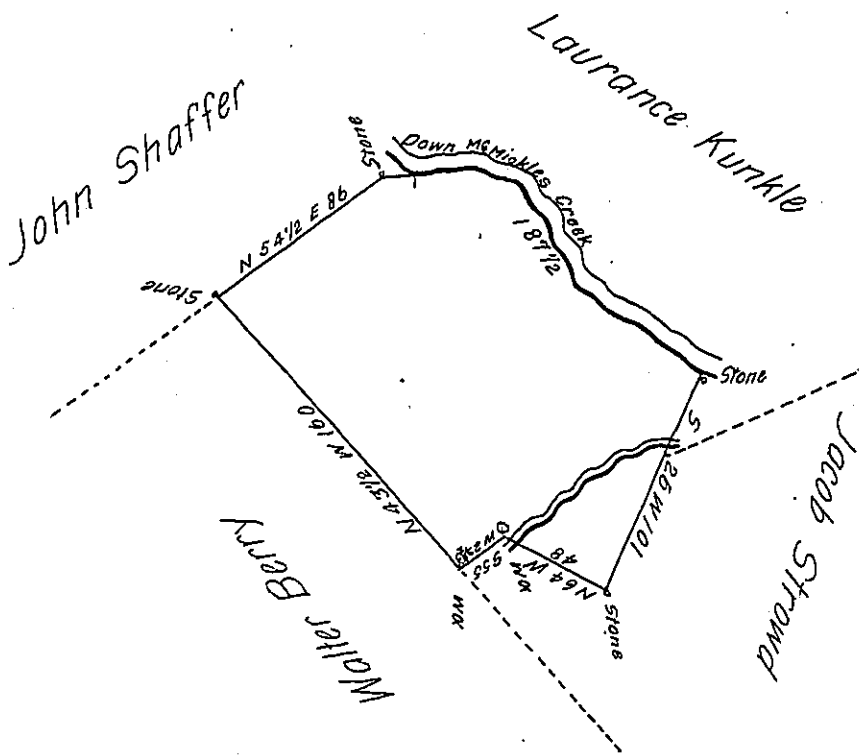


The Bearings & Distances  
down Mr. Mickles Creek, are

- 1. N 83° E 48 1/2 <sup>Per.</sup>
- 2. S 51° E 30
- 3. S 21° E 40
- 4. S 62° E 69
- Per. 187 1/2



By Virtue of a Warrant dated the 5<sup>th</sup> March 1788. Surveyed the 20<sup>th</sup> May 1788  
to John Depper the above described Tract of Land Situate in Hamilton Township  
Northampton County Containing One Hundred and twentysix Acres Sixty perches  
and the Allowance of Six P. Cent &c.

P. Geo. Palmer

John Lukens Esq. }  
Survey<sup>r</sup>. General }

IN TESTIMONY that the above is a copy of the original remaining on file in  
the Department of Internal Affairs of Pennsylvania, made  
conformably to an Act of Assembly approved the 16th day of  
February, 1833, I have hereunto set my Hand and caused  
the Seal of said Department to be affixed at Harrisburg,  
this first day of August 1904

*Isaac B. Brown*  
Secretary of Internal Affairs.